



**VRIL-WINGS**

VRILONE Manual



# Inhalt

<b>VRILONE</b>	<b>4</b>
<b>Warning</b>	<b>5/6</b>
<b>Technichal Data</b>	<b>7</b>
<b>Start</b>	<b>8</b>
<b>Landing</b>	<b>8</b>
<b>Glide</b>	<b>9</b>
<b>Handling</b>	<b>9</b>
<b>Speed</b>	<b>9</b>
<b>Wide Cell Technology</b>	<b>10</b>
<b>Zero Ballooning Technology</b>	<b>11/12</b>
<b>D10 Material</b>	<b>13</b>
<b>Lines/Flairs</b>	<b>13</b>
<b>Risers</b>	<b>14</b>



**VRIL-WINGS**



**VRIL-WINGS**



**VRIL-WINGS**

# VRIL

Thank you for choosing the VRILONE. Good choice!

With the VRILONE we have created something special. We call it Easyriding / Easyflying. Safe, manageable flying with minimum size and weight, and maximum fun and experience.

The VRILONE is particularly characterized by:

- its easy take-off
- the Flair at the Landing / Landingbooster
- the very good Glide
- its high level of passive safety
- very good handling with high pitch and roll stability
- Flying fun without limits
- Light / small pack size

At the construction level, this is made possible by the following innovations:

- Landing Booster
- Wide-Cell Tech (cells are up to 50% wider)
- Zero-Ballooning Tech (no ballooning)

**We wish you a lot of fun and many nice, safe flights and adventures with your VRILONE.**

# Warning

**Paragliding is dangerous and can lead to serious accidents with injuries or even death! Improper handling also increases the risk. Always use safety equipment and have a qualified flight instructor instruct you.**

**When using a Vril-Wings product, you accept all risks associated with its use and you undertake to keep Vril-Wings and all third parties free of damage and complaints in the event of damage or accident. Neither the company Vril-Wings nor a dealer can guarantee your safety. From the moment you use a Vril-Wing product, you are 100% responsible for the equipment and your actions.**

**The paraglider may neither be sold nor passed on to third parties. Furthermore, the glider does not comply with the aviation authority approval regulations.**

**Unapproved paragliders are only allowed to enter approved terrain in accordance with point 2.2.1.3 of the BMV decree and can only be used with a B license (special pilot license).**

- 
- PILOT / pilot must have a valid paragliding license and should be a very accomplished pilot with several hundred flights. Previous knowledge of acro flying and landing small paragliders is a great advantage
- Get to know the glider in a paragliding school together with an instructor.
- When used with skis, you should have very good skiing skills. Outside the secured slope area, knowledge of avalanche awareness and rescue is very important.
- WEATHER / Fly only in calm, stable conditions. Never fly in turbulent conditions, thunderstorms, strong winds or cold fronts. Also watch out for other alpine risks such as falling rocks and avalanches.
- TERRAIN / Fly the paraglider in an approved area. Make sure that there are no obstacles or hazards.
- INSPECTION / Check the entire wing carefully for damage before each take-off. Wing, risers, shoulder strap, suspension points etc. The seat belt with carabiners, airbag, rescue, helmet must also be checked. Stop flying in the event of the slightest damage to the material, carabiner, seams or any other component. 5 point check before the start.
- EQUIPMENT / Use a reserve parachute, an approved seat with airbag and a certified flight helmet.
- PHYSICAL - MENTAL CONSTRUCTION / Fly only in perfect physical and mental state. Never fly when you are ill, under the influence of medication, drugs or alcohol.
- ACRO / Do not fly stalls or acro maneuvers. The stalls are difficult to fly due to the small size of the wing and the single skin technology. Acre maneuvers cannot be flown.
- CHECK / Have the paraglider checked every year by a paraglider check company or directly at Vril-Wings

## Technical Data

<b>VRILONE</b>			
<b>size</b>	<b>12</b>	<b>14</b>	<b>16</b>
<b>cells</b>	25	25	25
<b>flat area (m<sup>2</sup>)</b>	12,00	14,00	16,00
<b>span (m)</b>	8,12	8,77	9,38
<b>a/r</b>	5,50	5,50	5,50
<b>area proj. (m<sup>2</sup>)</b>	10,04	11,71	13,39
<b>span proj. (m)</b>	6,35	6,86	7,34
<b>a/r proj.</b>	4,02	4,02	4,02
<b>Chord center (m)</b>	1,81	1,95	2,09
<b>Chord tip (m)</b>	0,36	0,39	0,42
<b>Starting weight</b>	45-104	45-104	45-104

# Start

- **The safest way for every pilot to get Information about the Glider, is doing a lot of Groundhandling !!!!**
- The starting behavior of the VRIL is easy to describe. Moderate start- walking/running and the glider comes over your head, a few quick steps and light braking and you're flying!
- The glider only needs a low starting speed to get over your head. Starting up too quickly can result in the wing shooting forward sharply.
- When starting forwards with no wind or with a slight tailwind, it is advisable to start with the A-risers.
- For reverse starting you can also use the A-risers. When there is a stronger updraft, it is also advisable to pull the glider up with your body weight so that you can brake immediately.

# Landing

- **Avoid heavily braked landings**
- End approach that is unbraked or, in the case of turbulence, slightly braked, then brake continuously approx.
- Practice landing in flight by running the glider and applying the brakes. A vario is also helpful in order to be able to better assess braking and climbing.



## Best Glide

- The glider unfolds its best glide ratio when slightly braked (approx. 3-5 cm from zero point). It is advisable to test this out using a Vario in order to find the best glide for the individual load.

## Handling

- Due to the small size of the VRILONE, the handling can be classified as very dynamic.
- It is advisable to try out the handling in free air space first until you are used to it. Easyriding with skis or maneuvers on the slope only if you have a lot of practice and know the glider well.

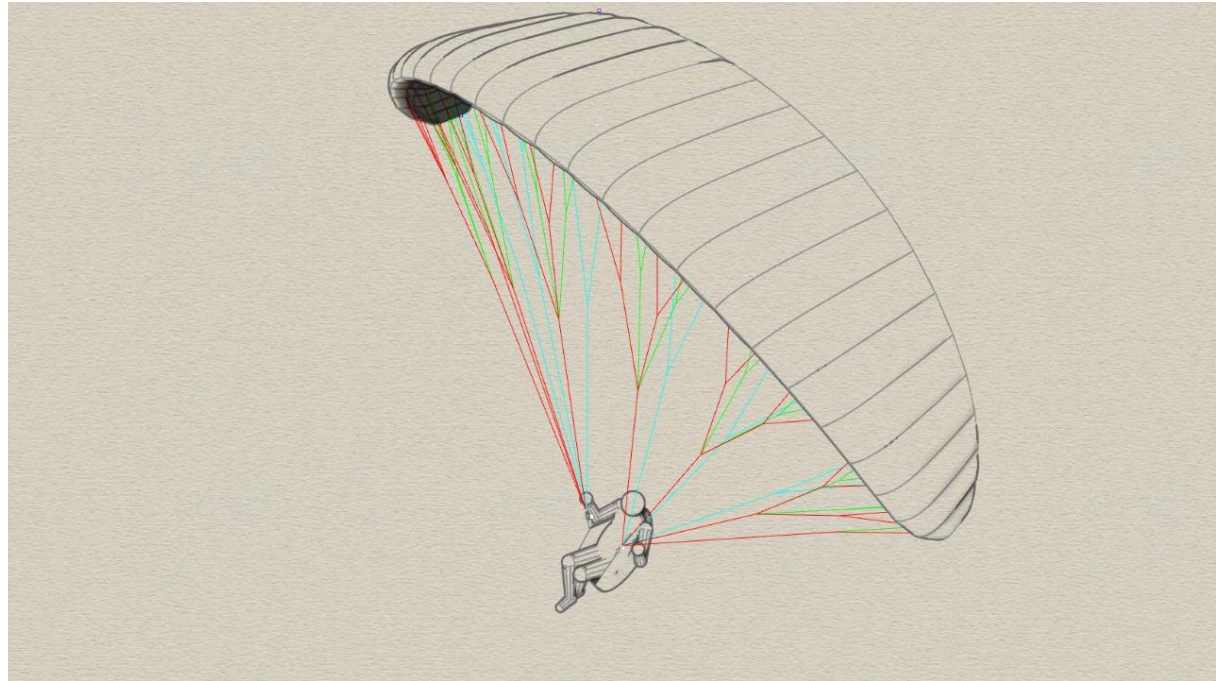
## SPEED

- Depending on the load, the VRILONE has a trim speed of. 44-48 km / h. The speed also depends on the size of the wing.

## Wide Cell Technology

The VRIL has up to 50% wider cells, this enables an optimization of the line resistance. 35% less lines also means a significant reduction in the air resistance of the lines by 35%.

Among other things, this is a factor in improving glide performance and landing



## Zero Ballooning Technology



In the area of the leading edge, the VRILONE no longer has ballooning. This gives the VRIL its perfectly positioned nose.



## D10 Material

The VRILONE is made of extremely light Dominico 10D nylon fabric. A reinforcing thread net is woven into this synthetically manufactured fabric, which prevents further tearing and increases the tensile strength at the seams. The smaller ripstop squares as in comparison cloths also increase the tear resistance.

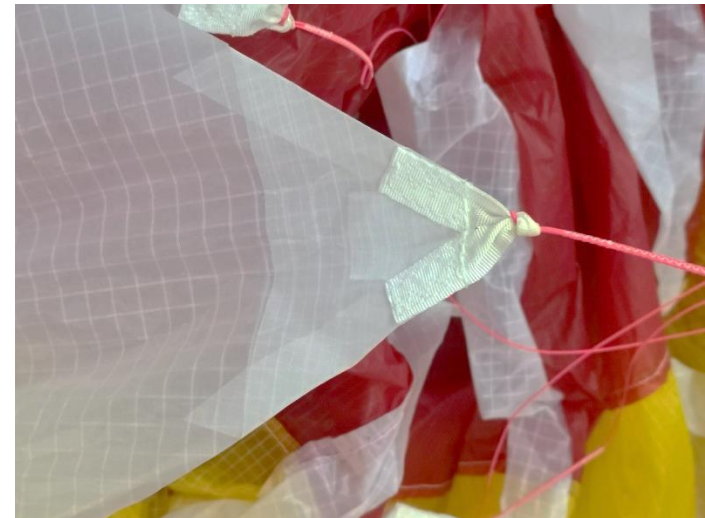
The coating makes the fabric water-repellent, UV-resistant and impermeable to air.



## Lines / Flairs

The VRILONE has Dynema lines on the main and central level. The top level is uncovered. The lines can be sorted well even in extreme terrain and poor visibility.

The flairs on the umbrella are reinforced.





# RISERS

We love our Risers. Many Points that make them special.

- The A-lines are looped directly into the A-riser. Changing lines is still easy. B- shoulder strap with soft linkDer
- The A-riser is colored (red-left / green-right) and the B-riser is covered with black. This stiffens the whole riser extremely, and gives it a great handling in contrast to normal Dynema risers
- A red line is sewn into the B-riser, which makes it easier to visually check against twisting
- Ceramic ring for brake line guide.
- Light brake handle with push button

To change A-lines, the soft link on the B-riser must be opened and removed. Then the A-lines can be changed



